

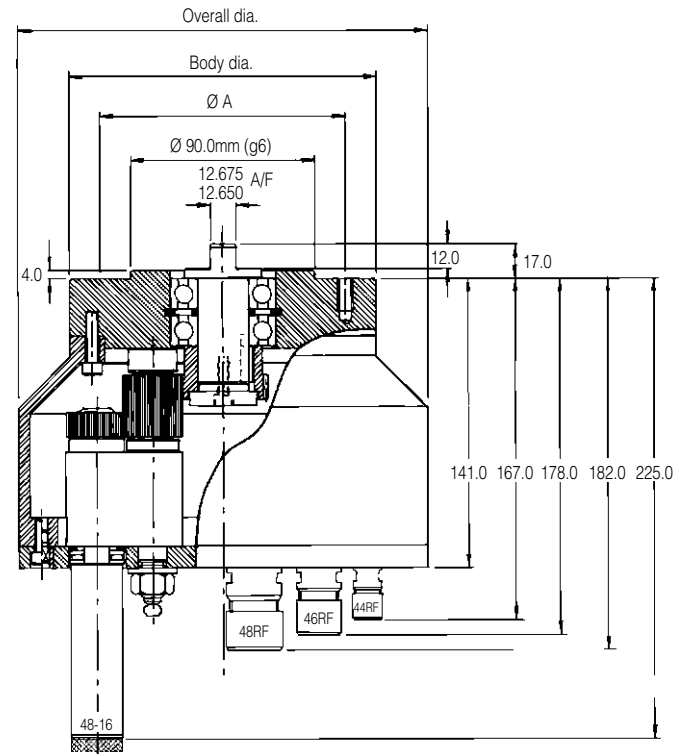
40 RANGE



Unit B Grovelands Estate, Longford Road, Exhall, Coventry CV7 9ND
 Tel: +44 (0)24 7664 5999 | Fax: +44 (0)24 7664 4081
 Email: ppickering@coventrytoolholders.co.uk | Web: www.ctl-centreline.com
 A Member of Coventry Engineering Group

MAIN BODY ASSEMBLY

Dimensions (mm)				
Main Body Assembly	Overall dia.	Body dia.	A (8 holes equispaced)	Unit Weight (kg)
40 DE 32	150.0	125.0	Ø110.0mm (M6 x 16 d'p)	3.80
40 EF 42	175.0	150.0	Ø120.0mm (M8 x 16 d'p)	5.50
40 EG 54	200.0	150.0	Ø120.0mm (M8 x 16 d'p)	6.00
40 FH 81	225.0	175.0	Ø120.0mm (M8 x 16 d'p)	7.20
40 HK XX	275.0	225.0	Ø120.0mm (M8 x 16 d'p)	9.90

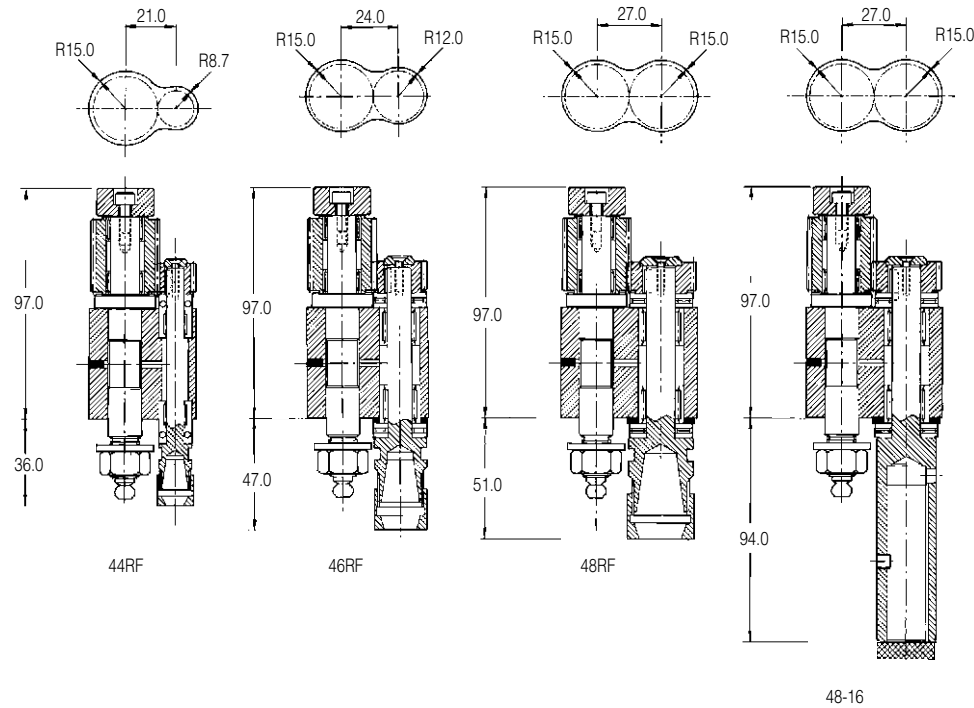


SPINDLE ASSEMBLY

Spindles			
Spindle Assembly	Max. Tool dia.	Max. Speed r.p.m.	Unit Weight (kg)
44RF	7.0	5000	0.5
46RF	10.0	5000	0.6
48RF/48-16	13.0	3500	1.1

Minimum Centre Distances			
Spindle Assembly	44RF	46RF	48RF/48-16
44RF	17.4	20.7	23.7
46RF	20.7	24.0	27.0
48RF/48-16	23.7	27.0	30.0

The 44, 46 and 48 spindle assemblies can be fitted to the same head. This is useful in overcoming possible close centre problems. A further advantage is the higher gear ratio of the smaller spindles, which helps if drilling large and small holes at the same time.



SPECIFICATIONS

Maximum and Minimum Pitch Circle Diameters with Spindles Equispaced

Main Body Assembly	Spindle Assembly	44RF								46RF								48RF / 48-16								
		No. of Spindles								No. of Spindles								No. of Spindles								
40 DE 32	Max. P.C. Ø	2	3	4	5	6	7	8	2	3	4	5	6	7	8	2	3	4	5	6	7	8	fig.1			
		98.7	98.7	98.7	98.7				92.0	92.0	92.0	92.0				86.0	86.0	86.0				fig.2				
	Min. P.C. Ø				26.0						71.1	85.1						80.6					fig.3			
				19.9	24.4						27.7							55.0					fig.4			
		17.4							24.0							30.0							fig.5			
Head Ratio: 2.13:1								Head Ratio: 1.52:1								Head Ratio: 1.19: 1										
40 EF 42	Max. P.C. Ø	2	3	4	5	6	7	8	2	3	4	5	6	7	8	2	3	4	5	6	7	8	fig.1			
		111.0	111.0	111.0	111.0	111.0			117.0	117.0	117.0	117.0	117.0			111.0	111.0	111.0	111.0	111.0			fig.2			
	Min. P.C. Ø					88.1					63.7	86.7	97.3					78.3	95.9	105.1			fig.3			
					29.4						34.1							34.6					fig.4			
		27.0	27.0	27.0					24.0		27.7	33.9				30.0							fig.5			
Head Ratio: 2.80:1								Head Ratio: 2.00:1								Head Ratio: 1.56: 1										
40 EG 54	Max. P.C. Ø	2	3	4	5	6	7	8	2	3	4	5	6	7	8	2	3	4	5	6	7	8	fig.1			
		123.0	123.0	123.0	123.0	123.0	123.0	123.0	129.0	129.0	129.0	129.0	129.0	129.0	132.0	132.0	132.0	132.0	132.0	132.0	132.0	fig.2				
	Min. P.C. Ø					89.6	100.6	107.0					84.0	101.2	110.0	115.4					97.0	112.0	117.8	122.6	fig.3	
						51.2	45.4						47.2								34.6	42.4			fig.4	
		39.0	39.0	39.0	39.0	39.0			33.0	33.0						30.0								fig.5		
Head Ratio: 3.60:1								Head Ratio: 2.57:1								Head Ratio: 2.00: 1										
40 FH 81	Max. P.C. Ø	2	3	4	5	6	7	8	2	3	4	5	6	7	8	2	3	4	5	6	7	8	fig.1			
		150.0	150.0	150.0	150.0	150.0	150.0	150.0	156.0	156.0	156.0	156.0	156.0	156.0	157.0	157.0	157.0	157.0	157.0	157.0	157.0	fig.2				
	Min. P.C. Ø																							fig.3		
																								fig.4		
		66.0	66.0	66.0	66.0	66.0	66.0	66.0	60.0	60.0	60.0	60.0	60.0	60.0	54.0	54.0	54.0	54.0					fig.5			
Head Ratio: 5.40:1								Head Ratio: 3.86:1								Head Ratio: 3.00: 1										
40 HK XX	Max. P.C. Ø	2	3	4	5	6	7	8	2	3	4	5	6	7	8	2	3	4	5	6	7	8	fig.1			
		194.0	194.0	194.0	194.0	194.0	194.0	194.0	200.0	200.0	200.0	200.0	200.0	200.0	206.0	206.0	206.0	206.0	206.0	206.0	206.0	fig.2				
	Min. P.C. Ø	Please refer to Centreline's Engineering Department for more information on this range																						fig.3		
		92.0	92.0	92.0	92.0	92.0	92.0	92.0	86.0	86.0	86.0	86.0	86.0	86.0	80.0	80.0	80.0	80.0	80.0	80.0	80.0	fig.4				
																							fig.5			

